



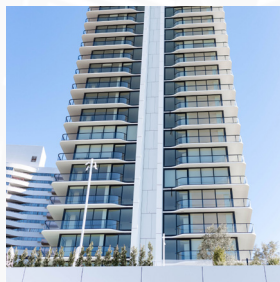
SCOPES OF WORK

RAIN SCREEN SYSTEMS

Raymond’s extensive experience with exterior finishing systems ensures that your Rainscreen system will be installed with the highest attention to detail, quality, and aesthetics. A Raymond installed Rainscreen system will protect and beautify your building.



CHANEL FLAGSHIP STORE



LANDMARK TOWER
ENR Best Residential/ Hospitality



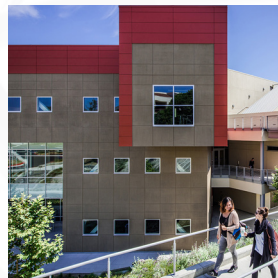
CORESITe



LMU SCIENCE BUILDING



WALLIS ANNEBERG PERFORMING ARTS



SADDLEBACK COLLEGE
WWCCA Project of the Year

PROFILE

- 89 Years in Operation
- Women’s Business Enterprise (WBE)
- Over 1,000 Highly Skilled Craftsmen and Artisans
- Theming Experts
- Early Adaptor of 3D/4D/5D Modeling
- Member of U.S. Green Building Council (USGBC)
- Member of Air Barrier Association of America (ABAA)
- AWCI EIFSsmart Contractor
- Strong Financial Resources and Bonding Capability
- Commitment to Safety – 2025 Ex. Mod. CA .56, NV .66



LANDMARK TOWER II

Landmark Tower II is a new 34-story, 415,000-square-foot apartment building, comprised of 376 apartment units, fitness and recreation areas, a swimming pool and pool deck, and 4-levels of underground parking. Landmark Tower II is now the tallest building in West Los Angeles.

Raymond (and CSI Scaffolding subcontractor) designed and erected scaffold over 350' high (from ground to roof), with a platform at each working level of over 200 square feet. The top level, Level 34, used cantilevered scaffolding for canopy framing and Swiss Pearl installation. This scaffold stood at over 350' off the ground level and extended over 4' away from the building edge. All hand tools were tied off to prevent any potential drops.

Levels 3-30 of the Landmark Tower contain all of the typical apartment units, while levels 31-34 house the larger penthouse units. Vertical Swiss Pearl fins are featured up the west and east sides of the building, from ground to roof, with Swiss Pearl canopies on levels 1, 2, and 34. At levels 2 and 34, the Swiss Pearl fins transition into the canopies with curved panels. Maintaining finish alignments from straight to curved at these transitions was critical.

- Raymond packaged the Swiss Pearl so each floor's panels could be stocked and installed in order, and then moved on wheels to the other side of the floor when the panel balance was installed.
- Swiss Pearl installation was a challenge when figuring out how to maneuver some of the larger panels without damaging them through limited scaffold space.

This project was the first North American Swiss Pearl project to have curved Swiss Pearl panels.

HIGHLIGHTS

LOCATION

Los Angeles, CA

YEAR COMPLETE

2022

CONTRACT VALUE

\$26M

**GENERAL
CONTRACTOR**

MATT Construction

ARCHITECT

Gensler

SIZE

415,000 sq.ft.