



MILLWORK

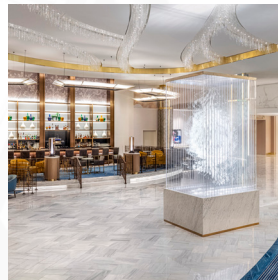
Raymond provides custom-made millwork that is decorative, practical, and most of all, meets our customers' fit and finish and aesthetic requirements. Starting early in the process, Raymond works with customers to get the optimal design, measurements, and appropriate material to produce doors, molding, trim, flooring, wall paneling, crown moldings, and more with the highest accuracy and quality. From design and fabrication to installation, Raymond creates unique millwork pieces that stand the test of time.



FONTAINEBLEAU



THE GRAND LA



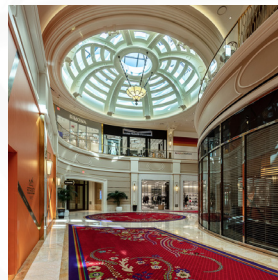
RESORTS WORLD



SOFI STADIUM & YOUTUBE THEATER



T-MOBILE ARENA



WYNN RETAIL

PROFILE

- 89 Years in Operation
- Women's Business Enterprise (WBE)
- Over 1,000 Highly Skilled Craftsmen and Artisans
- Theming Experts
- Early Adaptor of 3D/4D/5D Modeling
- Member of U.S. Green Building Council (USGBC)
- Member of Air Barrier Association of America (ABAA)
- AWCI EIFSsmart Contractor
- Strong Financial Resources and Bonding Capability
- Commitment to Safety – 2025 Ex. Mod. CA .56, NV .66



FONTAINEBLEAU

The Fontainebleau Las Vegas development is comprised of a 150,000-square-foot casino, world-class dining, vibrant entertainment and nightlife, and more than 3,600 exquisite hotel rooms and suites.

Scope of Work: Raymond's millwork scope on the project included millwork door casings, millwork and drywall crown moldings, and millwork wall panels at the hotel tower. Raymond's additional scope of work included exterior framing, sheathing, weather and air barriers, and painting, and interior demolition, framing, gypsum wallboard, taping, fire-stopping, painting, wallcoverings, and drywall crown moldings at the hotel tower; framing, fire-stopping, drywall, finishes, painting, prefabricated metal space frames, and decorative louvers at the garage; fireproofing, framing, firestopping, drywall, finishes, painting, wallcoverings, and ceilings and treatments at the theater; and acoustical treatments, framing, drywall, finishes, painting, wallcoverings, and ceilings and treatments at the Nightclub.

Highlights:

- Exterior EIFS was completed on the Level T63 rooftop walls.
- Level 5 finishes were used throughout the resort property.
- Design and drafting through preconstruction benefited project management staff and enabled utilization of laser layout, eliminating calculation errors. It also resulted in reduced field labor and reduced waste on the floors.
- Outstanding coordination with the field, subcontractors, and general contractor was necessary to meet skilled manpower needs and maintain production on a quickly moving project with frequent design changes and growing scope of work.
- Raymond's manpower reached 380 at its peak.

HIGHLIGHTS

LOCATION

Las Vegas, Nevada

YEAR COMPLETE

2023

CONTRACT VALUE

\$175M

GENERAL CONTRACTOR

W.A. Richardson

ARCHITECT

Carlos Zapata/
Bergman Walls &
Associates

SIZE

173,000 sq.ft.