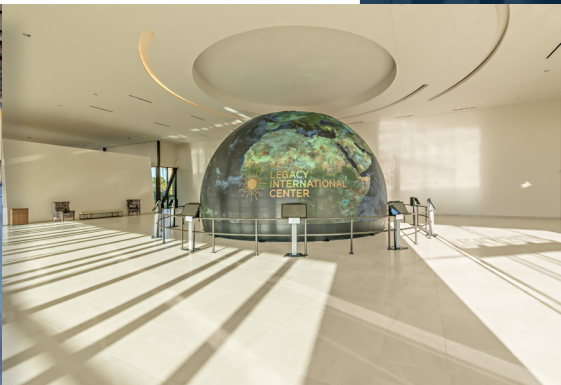
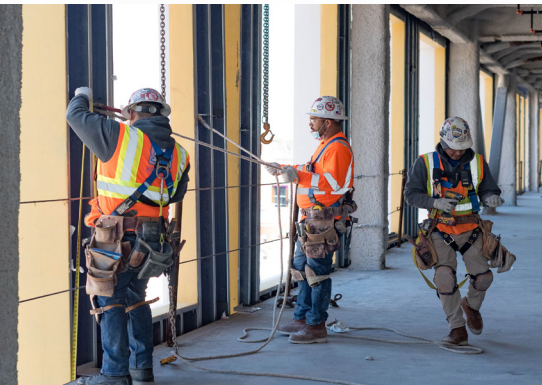


THE RAYMOND GROUP

STATEMENT OF QUALIFICATIONS



WOMEN
OWNED

RAYMOND
BUILDING THE FUTURE SINCE 1936

OUR VALUES

TRUST | Conducting ourselves in a manner that will earn the respect of our employees, clients and vendors

INTEGRITY | Operating with the highest moral standards

QUALITY | Achieving excellence in all that we do

SAFETY | Protecting the well-being of our employees

RESPECT | Recognizing and appreciating people's contributions

CONTINUOUS IMPROVEMENT | Committing to move from good to great

WORK/LIFE HARMONY | Balancing a passion for work and a zest for life

TEAMWORK | Maximizing the collective talents of our people to accomplish our goals

PRIMARY MARKET SECTORS

CASINO/GAMING

EDUCATION

ENTERTAINMENT/ATTRACTION

HEALTHCARE

HOSPITALITY

INSTITUTIONAL/CIVIC

OFFICE/CORE AND SHELL

PARKING STRUCTURES

RESIDENTIAL/MULTI-FAMILY HOUSING

RETAIL

TENANT IMPROVEMENT

TRANSPORTATION

SELF PERFORMED CAPABILITIES

STRUCTURAL FRAMING | LIGHT GAUGE STEEL STUD FRAMING

SPRAY APPLIED AND INTUMESCENT FIREPROOFING

EXTERIOR SHEATHING

EXTERIOR INSULATION AND FINISH SYSTEMS (EIFS)

EXTERIOR PREFABRICATED PANEL SYSTEMS

RAIN SCREEN SYSTEMS | AIR AND WATER BARRIERS

INSULATION | SPRAY INSULATION AND SOUNDPROOFING

DRYWALL

LATH & PLASTER

VENETIAN PLASTER | VENEER PLASTER LE DECOR LIME PLASTER SYSTEMS

CAST MOLDING AND ORNAMENTS (FRP, GFRC, GFRC)

THEMED FINISHES

CARVED PLASTER | MILLWORK AND CASEWORK | CUSTOM DOORS AND WINDOWS | TILE | BRICK | STONE AND ROCK WORK | DECORATIVE METAL AND GLASSWORK | SPECIALTY FINISH SYSTEMS | WALL COVERING | PAINTING | SCENIC AGING | FAUX FINISHING



TABLE OF CONTENTS

CORPORATE PROFILE | QUALITY

SAFETY

VIRTUAL DESIGN AND CONSTRUCTION

PREFABRICATION STRATEGIES

PROJECT EXPERIENCE

THE RAYMOND GROUP

9560 Chesapeake Drive
San Diego, California 92123
858.292.4499 p
CA License #877824
WBENC #WBE2402452

520 West Walnut Avenue
Orange, California 92868
714.771.7670 p
CA License #243645
WBENC #WBE2302991

4589 Pacheco Blvd.
Martinez, California 94553
925.680.8300 p
CA License #307786
WBENC #WBE2303494

6435 Valley View Boulevard, Suite H
Las Vegas, Nevada 89118
702.891.8875 p
NV License #35448
WBENC #WBE2302992





CORPORATE PROFILE

- 89 years in Operation
- 1,000 Employees
- Highly Skilled Craftsmen and Artisans
- Theming Experts
- Early Adopter of 3D Modeling
- Transparent Cost Plus Documentation
- Members of National Fireproofing Contractors Association (NFCA)
- Members of U.S. Green Building Council (USGBC)
- Members of Air Barrier Association of America (ABAA)
- EIFSmart Contractor
- LEED Accredited Professionals
- Excellent Bonding Capacity
- Excellent Safety Record
- + Strong Balance Sheet and Financial Resources
- Certified Women's Business Enterprise (WBE)

For 89 years, Raymond has upheld the status as an award-winning union subcontractor. We have the expertise, innovation and capability of producing quality projects with unsurpassed safety. Holding both B and C Classification licenses, we can be a sole source for the general contractor. We offer a complete range of services, from conceptual budgeting to value engineering and engineering design assistance.

*Each member of Raymond's team is responsible for ensuring that Raymond's legendary reputation for quality is carried forward on every project. At Raymond, Quality is one of our core values: **ACHIEVING EXCELLENCE IN ALL THAT WE DO.***



QUALITY ASSURANCE MANAGEMENT

Raymond has incorporated Quality Assurance as an integrated system of management. Our Quality Assurance Management is one of our core competencies that separate Raymond from our competitors. Raymond's extensive training programs and best practice measures have guaranteed our clients the quality assurance as well as the highest-level of service that is consciously maintained and managed throughout our organization. Our shared vision of quality extends beyond the highest quality of product installation to a culture of providing quality in all aspects of our business.

The objectives of Raymond's quality control program are managed at each level of our organization and are ultimately controlled with the implementation of project specific quality assurance plans. Our approach to quality begins at the estimating stage and is followed through at each operational step with adherence to Raymond's standard operating procedures. Our processes are standardized throughout the organization.



A DAILY COMMITMENT TO **SAFETY**

Through each employees' daily commitment to safety and Raymond's robust Safety and Health Program, we strive to be the safest specialty contractor in each of our market areas with zero workplace accidents.

SAFETY AND HEALTH **PROGRAM**

The Raymond Group Safety and Health Program exceeds all state and federal regulatory requirements and encompasses the following items:

- Establishing robust communications regarding workplace safety and health.
- Conducting safety and health inspections to find and eliminate unsafe working conditions.
- Developing and enforcing workplace safety practices.
- Training employees in good safety and health practices.
- Recognizing and incentivizing employees for working safely.
- Investigating workplace incidents to determine root causes and make corrections to improve our safety program.

A MESSAGE FROM **THE CEO** **TRAVIS WINSOR**

Safety is a core value at Raymond. Completing the job without incident is a top priority on every one of our projects. Safety is a commitment made at the beginning of every day, throughout the daily operations, and through the end of the shift to ensure that everyone gets home safely.

A key aspect of Raymond's safety program is the need to have diversity, tolerance, inclusion and respect each day on every jobsite. Raymond is made up of a diverse group of individuals focused on a common purpose; to provide for our families; to build unique and exciting projects and to help create better communities where we live. Working together safely makes Raymond a stronger and more dynamic company.



PROGRAM HIGHLIGHTS

- Daily Safety Huddles and Weekly Tailgate Meetings
- Daily Job Hazard Analysis and Pre-task Planning
- Close Call / Near Miss Reporting
- Pre-employment and Post-accident Drug Testing

SAFETY LEADERSHIP

Safety begins at the top. Raymond's Executive leadership is committed to a safe workplace and works daily to ingrain safety into the organization's culture. Safety is the first topic at every management meeting.

With a staff of more than 10 full-time safety professionals, Raymond's Safety Department proactively develops programs to prevent incidents and address job site hazards, in a continued effort to achieve safety excellence.

Integral to Raymond's safety program are the Raymond foremen and superintendents who manage the daily safety performance at our jobsites. These field leaders ensure that all field employees have received required training and are following all safety procedures and policies while doing their jobs. Raymond foremen and superintendents are OSHA 30 certified, as well as trained in first aid, CPR, fall protection, scaffold usage, and more.

SAFETY PERFORMANCE

Raymond's safety record proves:

- Our commitment to the safety and health of our employees
- Our dedication to continually improve our safety performance

COMPENSATION EXPERIENCE MODIFICATION RATE

	2021	2022	2023	2024	2025
CA	0.54	0.60	0.65	0.57	0.56
NV	0.54	0.70	0.75	0.70	0.66

SAFETY RECOGNITION

EXCELLENCE IN SAFETY 2022 / 2019 / 2018

Wall & Ceiling Alliance (WACA)

EXCELLENCE IN SAFETY 2024 / 2023 / 2020 / 2019 / 2018 / 2014 / 2013

The Association of the Wall and Ceiling Industry (AWCI)

EXCELLENCE IN SAFETY 2024 / 2023 / 2022 / 2021 / 2020 / 2018

Western Wall & Ceiling Contractors Association (WWCCA)

SAFETY AWARD FOR INTERIOR/EXTERIOR DRYWALL CONTRACTOR DIVISION 2018

World Wide Safety



SAFETY CONTACT

ED HANLEY
DIRECTOR OF SAFETY
Edward.Hanley@RaymondGroup.com

As Raymond’s Director of Safety, Ed Hanley is responsible for developing and implementing all elements of Raymond’s safety program. Hanley has over 25 years of experience in the construction industry, overseeing safety operations. Hanley is a founding member of the Association of the Wall and Ceiling Industry’s (AWCI) Safety Directors Forum, having served a three-year term as a co-chair.

VIRTUAL DESIGN AND CONSTRUCTION (VDC)

- ✓ VISUALIZE ADVANCED WALL AND CEILING ASSEMBLIES
- ✓ COORDINATE TRADES WITH MINIMAL INTERFERENCE
- ✓ INTEGRATE PREFABRICATED WALL ASSEMBLIES WITH MEP COMPONENTS

Projects are completed easier and quicker when everyone is working with the same vision and using the same information. Raymond achieves this collaboration with the support of our Virtual Design and Construction (VDC) team. Raymond and our VDC team members are experts at facilitating projects through value engineering, providing complex Building Information Modeling (BIM) and proposing less expensive and more constructible alternatives.

The Raymond VDC team thrives on keeping the construction process as smart and simple as possible. By using building information modeling, different stakeholders on a project collaborate by adding, modifying, or updating information in a shared model, resulting in a digital representation of the physical and functional characteristics of the project. This digital representation then becomes a resource that is leveraged to make decisions, even after the building has been completed and occupied.



VIRTUAL DESIGN AND CONSTRUCTION (VDC)

BIM SERVICES

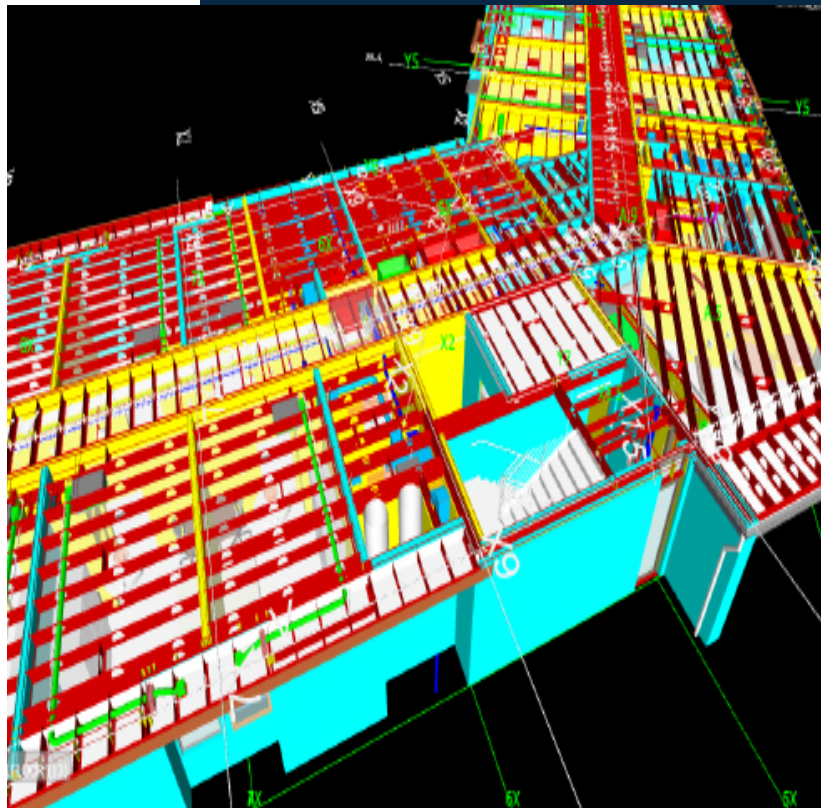
- Shop Drawing Preparation
- Material Quantity Extraction
- Integration of prefabricated wall assemblies with Mechanical, Electrical, and Plumbing components
- Visualization of advanced wall and ceiling assemblies
- Trade Coordination
- Time Scheduling with 4D BIM
- Cost Estimations with 5D BIM
- In house structural engineering advice for quick and accurate solutions for complicated framing methods

BIM TECHNOLOGY

- Revit Architecture
- Rhino
- Autocad Architecture
- Navisworks Manage
- BIM 360 Glue
- Collaboration for Revit
- BIM 360 Team
- Blue Beam
- Plan Grid
- Autodesk Point Layout
- Robotic QML Layout

BIM PROCESS GOALS

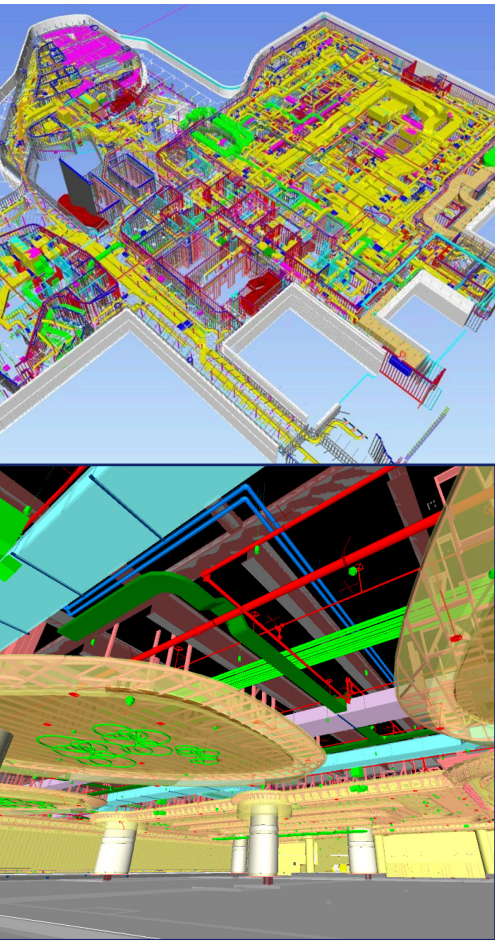
- Understand Client defined needs
- Clearly communicate project objectives
- Develop project specific processes to fulfill objectives
- Select the best people for roles/responsibilities/fit
- Establish ownership and team commitment to goals
- Cradle to grave approach to design assist: field, management, design
- Project Design Captain supports ongoing project operations
- Best Practice for Model transition to field staff



VIRTUAL DESIGN AND CONSTRUCTION (VDC)

BIM 3D, 4D & 5D PROJECT EXPERIENCE

JACOBS TOWER MEDICAL CENTER



CIRCA RESORT & CASINO

CSUSB STUDENT HOUSING & DINING
San Bernardino California
C.W. Driver

CEDARS SINAI MEDICAL CENTER - AHSP
Los Angeles, California
Hathaway Dinwiddie Construction Company

CHASE CENTER OFFICE TOWERS
San Francisco, California
Clark Construction

DISNEY'S LITTLE MERMAID ATTRACTION
Anaheim, California
Walt Disney Imagineering

UCSD JACOBS TOWER MEDICAL CENTER
La Jolla, California
Kitchell Construction

JW MARRIOTT
Anaheim, California
W.E. O'Neil

SOFI STADIUM & YOUTUBE THEATER
Inglewood, California
Turner | AECOM Hunt

UCSF MINNESOTA ST. HOUSING
San Francisco, California
Skanska

WESTIN
Anaheim, California
KCS West

WILSHIRE GRAND CENTER
Los Angeles, California
Turner Construction

PREFABRICATION STRATEGIES

Raymond utilizes prefabrication strategies on many projects to increase production and meet tight schedules, without compromising quality. Raymond offers several opportunities for prefabrication including:

- Exterior Panel Technology offering high quality prefabricated wall panel systems that maximize project schedules and increase safety.
- Drywall Milling Machines to produce high quality and precise gypsum cutouts, with the ability for mass production.
- Complete Roll Formed Framing Systems for a fast, cost-effective solution.



PREFABRICATED EXTERIOR PANEL TECHNOLOGY

Raymond combines the latest technology and proven products to deliver the most energy efficient, architecturally versatile exteriors in the construction industry today, employing a process that saves time, adds value and improves quality.

SPEED. Greatly reduce the time of building envelope installation and make the most of your construction calendar.

- Fast-Track, Systemized Panel Manufacturing
- Efficiencies Compress the Construction Schedule
- Indoor Production Means No Weather Delays
- Site Prep and Panel Construction Can Occur Simultaneously
- Reduced Multi-Trade Vendor Coordination
- Faster Installation Due to Prefab Panelization



VALUE. Reduce the cost of your project by eliminating scaffolding and other complications of working at high elevations.

- Lightweight Panels Lower Structural Requirements
- Smaller Footings / Foundations
- Reduced Jobsite Labor & Crew Sizes
- No Jobsite Scaffolding Required
- Decreased Volume of Project Concrete
- Reduced Drywall Furring, Boxing and Strapping

QUALITY. Panels are produced in temperature-controlled factories, in full compliance with codes for testing, building and energy efficiency.

- Prefab Panels Have ISO-Engineered Components
- Quality-Controlled Workmanship
- Strict Adherence to Temp/Humidity Guidelines
- Extensive Architectural and Finish Options
- Superior Fire, Acoustical and Thermal Performance
- Superior Long Term Durability



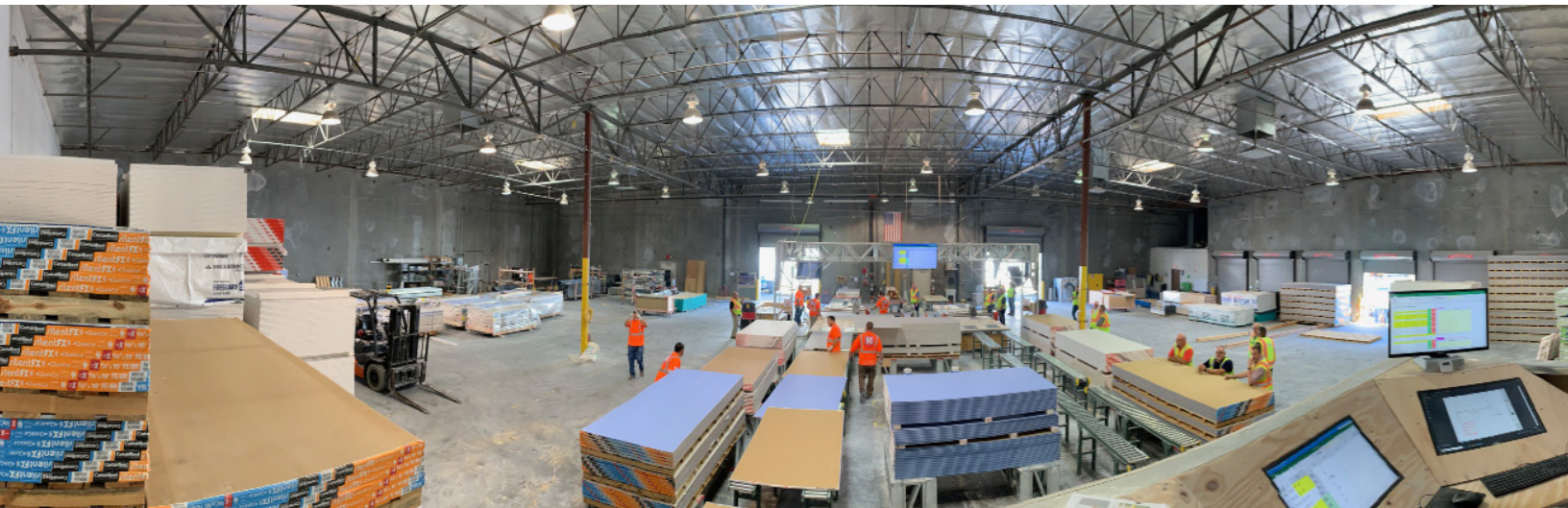
DRYWALL MILLING MACHINE

The Raymond Group is the owner of five (5) drywall milling machines, utilizing them in each office location.

This revolutionary manufacturing system makes creating intricate shapes and assemblies from drywall much more affordable and cost effective. Originally created for the need of architecturally demanding projects, today The Raymond Group uses these strategically located machines to help provide a safer, more timely, cost effective, less wasteful product for each of our projects where repetition and/or high design is required.

Key capabilities and benefits:

- + FABRICATE DRYWALL COMPONENTS OFF SITE SUCH AS SOFFITS, CORNERS AND SPECIALTY ITEMS.**
- + REDUCE MANPOWER ON THE PROJECT BY MOVING THE WORK OFF SITE.**
- + INCREASE THE QUALITY OF OUR INSTALLED DRYWALL.**
- + REMOVE A DUSTY AND TIME-CONSUMING OPERATION FROM THE PROCESS BY REDUCING CORNER BEAD AND TAPING.**



FRAMING SYSTEMS

An end-to-end design and build solution, prefabricated framing systems are designed to suit a wide range of projects that demand the rapid delivery of quality buildings. With the technology to manufacture complete roll formed framing systems, Raymond is able to complete projects more quickly, while minimizing waste and clutter.

Rapid Steel Framing Systems to produce cost-effective, lightweight steel framing components quickly and efficiently.

- + HIGHLY VERSATILE
- + INCREASED PRODUCTION SPEED
- + GREATER FLEXIBILITY
- + INCREASED RELIABILITY
- + HEAVY DUTY MANUFACTURING
- + HIGH VOLUME PRODUCTION



PROJECT EXPERIENCE

CIRCA RESORT & CASINO



RESORTS WORLD

“ [RAYMOND] MAKES A PROJECT VERY EASY TO MANAGE, AND IS VERY RESPONSIVE.” - TREVOR HAMMOND, MONTE CARLO HIGH RISE

CASINO/GAMING

AGUA CALIENTE

Palm Springs, California
The PENTA Building Group

CIRCA RESORT & CASINO

Las Vegas, Nevada
McCarthy Building Companies, Inc.

DURANGO STATION

Las Vegas, Nevada
W.A. Richardson

FONTAINEBLEAU

Las Vegas, Nevada
W.A. Richardson

GRATON RESORT

Rohnert Park, California
The PENTA Building Group

HARRAH'S RESORT & CASINO

Valley Center, California
W.E. O'Neil

MONTE CARLO HIGH RISE

Las Vegas, Nevada
MGM Resorts International

RESORTS WORLD

Las Vegas, California
W.A. Richardson

SAN MANUEL RESORT & CASINO

Highland, California
The PENTA Building Group

WYNN EXPANSION

Las Vegas, Nevada
The PENTA Building Group

PROJECT EXPERIENCE

LMU LIFE SCIENCES



SOUTHWESTERN COLLEGE PERFORMING ARTS

EDUCATION

BIOLA SCIENCE CENTER
La Mirada, California
C.W. Driver

CSUDH COLLEGE OF EXTENDED STUDIES
Carson, California
C.W. Driver

CSULA BIOSPACE
Long Beach, California
Sundt Construction

CSULB EXTENDED LEARNING
Long Beach, California
Matt Construction

CSUSB STUDENT HOUSING
San Bernardino, California
C.W. Driver

LMU LIFE SCIENCES
Los Angeles, California
C.W. Driver

KATHLEEN MACDONALD HIGH SCHOOL
San Jose, California
Swinerton Builders

PALOMAR COLLEGE
San Marcos, California
California Sheet Metal

SOUTHWESTERN COLLEGE
PERFORMING ARTS
Chula Vista, California
Rudolph & Sletten

UNLV MEDICAL EDUCATION BUILDING
Las Vegas, Nevada
MJ Dean Construction

PROJECT EXPERIENCE

ENTERTAINMENT/ATTRACTION

T-MOBILE ARENA



SOFI STADIUM

“ RAYMOND IS ONE OF MY TOP CONTRACTORS THAT I CAN RELY ON TO HELP FIGURE OUT HOW TO GET THE JOB DONE. THEY ARE MUCH MORE A PARTNER THAN A SUBCONTRACTOR.” - RICK SOLOMON, CLARK CONSTRUCTION, GUARDIANS OF THE GALAXY

ACRISURE ARENA
Thousand Palms, California
AECOM Hunt

DISNEY PIXAR PIER
Anaheim, California
Mortenson | Clark JV

DISNEY GUARDIANS OF THE GALAXY &
MARVEL LAND
Anaheim, California
Clark Construction

DODGER STADIUM RENOVATION
Los Angeles, California
Hunt Construction

LA FORUM RENOVATION
Inglewood, California
Clark Construction

NBC UNIVERSAL AREA 51 SOUND STAGE
Universal City, California
Matt Construction

SEAWORLD
San Diego, California
Clark Construction

SOFI STADIUM & YOUTUBE THEATER
Inglewood, California
Turner AECOM-Hunt JV

SNAPDRAGON (SDSU AZTEC) STADIUM
San Diego, California
Clark Construction

T-MOBILE ARENA
Las Vegas, Nevada
The PENTA Building Group

PROJECT EXPERIENCE

HEALTHCARE

JACOBS TOWER MEDICAL CENTER



CALIFORNIA HEALTH CARE FACILITY

Stockton, California

Clark/McCarthy Joint Venture

CEDARS SINAI ADVANCED HEALTH SCIENCES PAVILION

Los Angeles, California

Hathaway Dinwiddie Construction Company

CENTENNIAL HILLS HOSPITAL

Las Vegas, Nevada

SR Construction

HIGHLAND HOSPITAL

Oakland, California

Clark Construction

JACOBS TOWER MEDICAL CENTER

La Jolla, California

Kitchell Construction Company

RADY CHILDREN'S EOB

San Diego, California

McCarthy Building Companies, Inc.

SAN FRANCISCO GENERAL HOSPITAL

San Francisco, California

Enclos Corporation

SANTA CLARA VALLEY MEDICAL CENTER

San Jose, California

Turner Construction/Pacific Erectors

UCSD THORNTON HOSPITAL KITCHEN

La Jolla, California

Kitchell Construction Company



CENTENNIAL HILLS HOSPITAL

PROJECT EXPERIENCE

WILSHIRE GRAND CENTER



WESTIN ANAHEIM

HOSPITALITY

ANAHEIM CONVENTION CENTER

Anaheim, California

Hensel Phelps Construction Company

THE GRAND LA

Los Angeles, California

AECOM/Tishman

GREAT WOLF LODGE & WATER PARK

Garden Grove, California

Turner Construction

JACKSON RANCHERIA

Jackson, California

Jackson Rancheria Hotel

JW MARRIOTT

Anaheim, California

W.E. O'Neil

LEGACY INTERNATIONAL CENTER

San Diego, California

Clark Construction

SUMMIT CLUBHOUSE

Las Vegas, Nevada

W.A. Richardson

SHERATON

Palo Alto, California

Charles Pankow Builders, LTD.

WESTIN

Anaheim, California

KCS West

WILSHIRE GRAND CENTER

Los Angeles, California

Turner Construction

PROJECT EXPERIENCE

INSTITUTIONAL/CIVIC

DGS NATURAL RESOURCES HQ



CALIFORNIA HEALTH CARE FACILITY

BRITISH CONSULATE
Los Angeles, California
Unispace

BEVERLY HILLS CIVIC CENTER
Beverly Hills, California
Hathaway Dinwiddie Construction Co.

CHSF STOCKTON
Stockton, California
Clark/McCarthy, Joint Venture

**DGS NATURAL RESOURCES
HEADQUARTERS**
Sacramento, California
Turner Construction

KEARNY MESA TRAFFIC COURT
San Diego, California
Rudolph & Sletten

MAPLE STREET CORRECTIONAL FACILITY
San Francisco, California
Sundt/Layton Joint Venture

MOFFETT HANGAR 2 & 3
Mountain View, California
Turner Construction

NORTHROP GRUMMAN
Palmdale, California
W.E. O'Neil

NLV CITY HALL
North Las Vegas, Nevada
Whiting-Turner Construction

PROJECT EXPERIENCE

OFFICE BUILDING/CORE & SHELL

FACEBOOK WEST CAMPUS



HORTON PLAZA

FACEBOOK WINDSURFER
Burlingame, California
Rudolph & Sletten

FACEBOOK WEST CAMPUS
Menlo Park, California
Level 10 Construction

GOOGLE PACIFIC SHORES
Redwood City, California
DPR Construction

HORTON PLAZA - LIVE/WORK/PLAY
San Diego, California
Turner Construction

KPMG
San Diego, California
Clune Construction

PLAYA VISTA PARCEL 2
Los Angeles, California
Hathaway Dinwiddie

UBER
San Francisco, California
Truebeck Construction

VIASAT BUILDING 13
Carlsbad, California
Whiting-Turner

WEWORK HEADQUARTERS
San Francisco, California
Dome Construction

WARNER BROS. PHASE 1 & 2
Burbank, California
Krismar Construction

“ MY GREATEST CONCERN AT THIS POINT WOULD BE WORKING WITH SUBCONTRACTORS THAT DON'T HAVE THE SAME DESIRE TO WORK AT THE LEVEL OF EXPECTATION I'VE COME TO SEE ON A DAILY BASIS WORKING WITH RAYMOND.” - PATRICK TOTTEN, DOME CONSTRUCTION, 246 1ST ST.

PROJECT EXPERIENCE

PARKING STRUCTURES

DEL MAR PARKING



KAISER PASADENA PARKING

DEL MAR PHASE 1
PARKING STRUCTURE
San Diego, California
ARB, Inc.

FONTAINEBLEAU PARKING
Las Vegas, Nevada
W.A. Richardson

KAISER PASADENA PARKING
Pasadena, California
ARB, Inc.

LA JOLLA COMMONS PARKING
STRUCTURE
La Jolla, California
ARB, Inc.

ONE PASEO PARKING
San Diego, California
Swinerton Builders

PACIFIC CITY PARKING
Huntington Beach, California
C.W. Driver

PALA PARKING
Pala, California
Bomel Construction

STANFORD PARKING
Palo Alto, California
Clark/McCarthy, Joint Venture

UNIVERSITY OF LA VERNE
PARKING
La Verne, California
Bomel Construction

PROJECT EXPERIENCE

875 CALIFORNIA ST.



UC DAVIS WEST VILLAGE HOUSING

RESIDENTIAL/MULTI-FAMILY HOUSING

1066 MARKET STREET
San Francisco, California
Swinerton Builders

1321 MISSION
San Francisco, California
Charles Pankow Builders

505 BRANNAN STREET
San Francisco, California
Swinerton Builders

51ST & BROADWAY
Oakland, California
Swinerton Builders

875 CALIFORNIA STREET
San Francisco, California
Swinerton Builders

LANDMARK TOWER II
Los Angeles, California
MATT Construction

TEN50 GRAND
Los Angeles, California
Lendlease

UC DAVIS WEST VILLAGE HOUSING
Davis, California
CBG Building Co.

UCSD PEPPER CANYON
La Jolla, California
Clark Construction

VARIEL SENIOR LIVING
Woodland Hills, California
W.E. O'Neil

PROJECT EXPERIENCE

2ND & PCH



COLLECTION AT UTC

“RAYMOND HAS BEEN AN EXCELLENT PARTNER FOR US ON OUR LARGE SCALE, OPEN FOR BUSINESS, RETAIL PROJECTS. THESE ARE DELICATE, YET FAST PACED ASSIGNMENTS, AND AS AN OUT OF TOWN [CONTRACTOR], WE COULD NOT BE HAPPIER WITH THE SUPPORT THE RAYMOND TEAM HAS PROVIDED.”
- AARON CLAYPOOL, PACIFIC NATIONAL GROUP

RETAIL

2ND & PCH
Long Beach, California
W.E. O'Neil

BURBANK TOWN CENTER
Burbank, California
W.E. O'Neil

COLLECTION AT UTC
La Jolla, California
The Whiting-Turner Contracting Co.

MACY'S GEARY & UNION SQUARE
San Francisco, California
Swinerton Builders

NORDSTROM UTC
La Jolla, California
Pacific National Group

ONE PASEO
San Diego, California
Whiting-Turner

PACIFIC CITY
Huntington Beach, California
C.W. Driver

SHOPPES AT CARLSBAD
Carlsbad, California
Whiting-Turner

WESTFIELD UTC
La Jolla, California
Westfield DDC, LLC

WYNN PLAZA
Las Vegas, Nevada
The PENTA Building Group

PROJECT EXPERIENCE

TENANT IMPROVEMENT

TIFFANY & CO.



EDWARDS LIFE SCIENCES

CHANEL FLAGSHIP
Beverly Hills, California
Dickinson Cameron

COOLEY
San Diego, California
Burger Construction

EDWARDS LIFE SCIENCES
Irvine, California
Clune Construction

GETTY VILLA COLLECTION
Pacific Palisades, California
Matt Construction

HERMES SOUTH COAST PLAZA
Costa Mesa, California
Hurst & Siebert, Inc.

KPMG
San Diego, California
Clune Construction

LOUIS VUITTON SOUTH COAST PLAZA
Beverly Hills/Costa Mesa/La Jolla, California
Hurst & Siebert, Inc.

SAN DIEGO ZOO
San Diego, California
Zoological Society

SHEPPARD MULLIN
Costa Mesa, California
Clune Construction

TIFFANY & CO.
Costa Mesa, California
Hurst & Siebert, Inc.

PROJECT EXPERIENCE

TRANSPORTATION

SAN FRANCISCO AIRPORT TERMINAL 2



SAN JOSE AIRPORT TERMINAL B

AMERICAN AIRLINES AT SFO

San Francisco, California

Turner Construction

CONRAC GARAGE

San Jose, California

Hensel Phelps Construction

LA METRO

Los Angeles, California

Perez Construction

MINETA SAN JOSE INTERNATIONAL AIRPORT - TERMINAL B CONCOURSE

San Jose, California

Clark Construction

QANTAS FIRST CLASS LOUNGE

Los Angeles, California

Turner Construction

SAN FRANCISCO INTERNATIONAL AIRPORT CONTROL TOWER

San Francisco, California

Pacific Erectors

SAN FRANCISCO INTERNATIONAL AIRPORT - TERMINAL 2 BOARDING AREA D RENOVATION

San Francisco, California

Turner Construction